



# Kennedy NEMA Enclosures

Jack  
Kennedy  
Metal  
Products  
&  
Buildings,  
Inc.



*A trusted source for all metallic NEMA rated designs  
with standard and custom sizes available.*



# Introduction

---

*Jack Kennedy Metal Products has been manufacturing NEMA enclosures for several decades as part of our OEM product line serving other industries across the globe. We're excited to announce the expansion of our enclosure line directly to electrical wholesalers.*

## What We Do

---

*We fabricate 'standard' and custom electrical enclosures to NEMA standards. Thousands of types & size combinations with competitive pricing allow us to fulfill most requests quickly. In most cases, we're able to start production on your order within 24 hours of receiving the PO, even on custom enclosures!*

**FAST DELIVERY!!!**



## Types of Enclosures We Offer

---

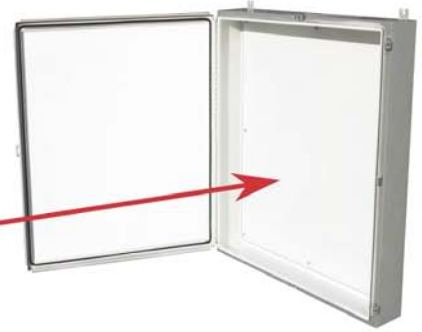
*Currently NEMA 1, 3R, 4, 4X and 12 are available in both galvanized steel painted with ANSI gray epoxy paint as well as stainless steel. Sizes range from 4" x 4" pull boxes up to walk-in I.T. cabinets.*



# Why Switch to Kennedy?

- Economically priced
- Fast delivery
- TWO layers of protection using epoxy paint over galvanized steel
- Back plane INCLUDED with NEMA 4, 4X and 12 enclosures
- Small family business feel with big business capabilities

**BACKPLANE INCLUDED**



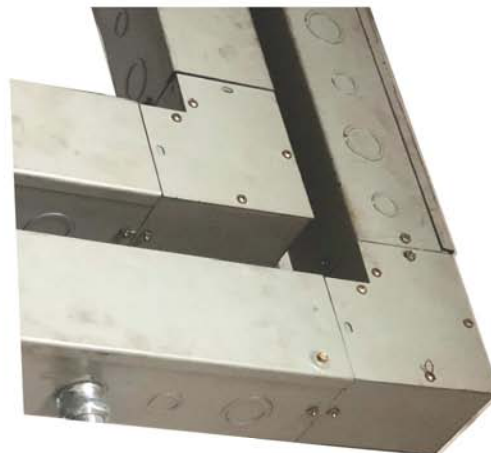
## Custom Enclosures

Options are available such as data pockets, ventilation louvers, knockouts, pre-punched and/or tapped holes, HMI cutouts, etc...



## Coming Soon...

A full line of electrical trough in several sizes and styles with all appropriate joint & elbow fittings.





## **Jack Kennedy Metal Products & Buildings, Inc.**

P.O. Box 138

Taylorville, Illinois 62568

Phone (217) 287-7231 Fax (217) 287-7232

Email [info@kennedymetal.com](mailto:info@kennedymetal.com)

**For the best value and customizable enclosure line with quick turnaround, trust the Kennedy solution...**

- NEMA 1, 3R, 4, 4X & 12 enclosures
- Double layer corrosion protection using galvanized steel coated with epoxy paint
- Backplane INCLUDED with NEMA 4, 4X and 12 boxes
- Wide variety of sizes available
- Quick delivery, even on custom enclosures
- Many options available including but not limited to louvers, custom paint, pre-punched / tapped holes, custom labels, etc...

