

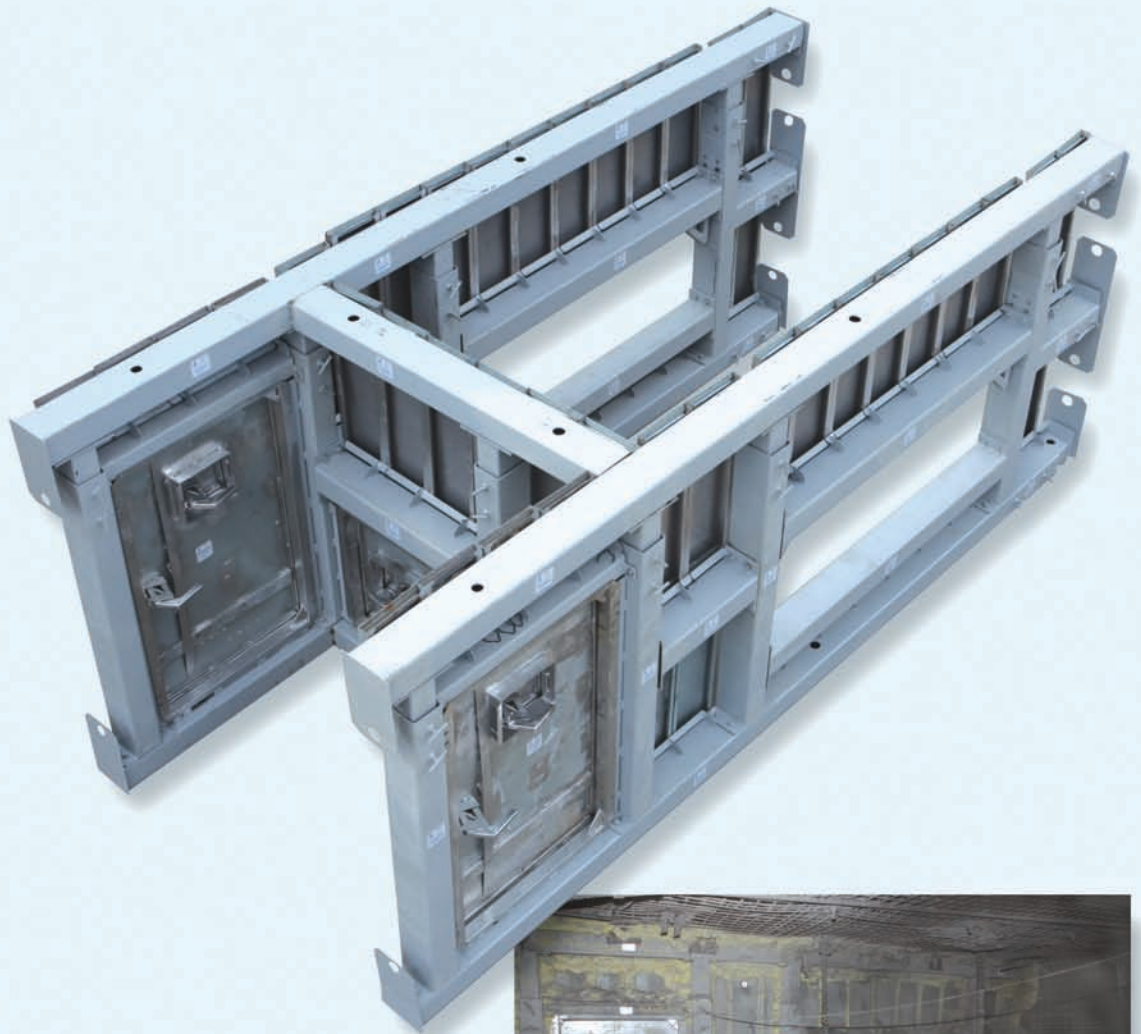


# Kennedy Modular Conveyor Box Check

The Premier Conveyor Belt  
Air Velocity Control System  
For Underground Mines

Jack  
Kennedy  
Metal  
Products  
&  
Buildings,  
Inc.

Part of the  
Good Air  
Solution



# Problem

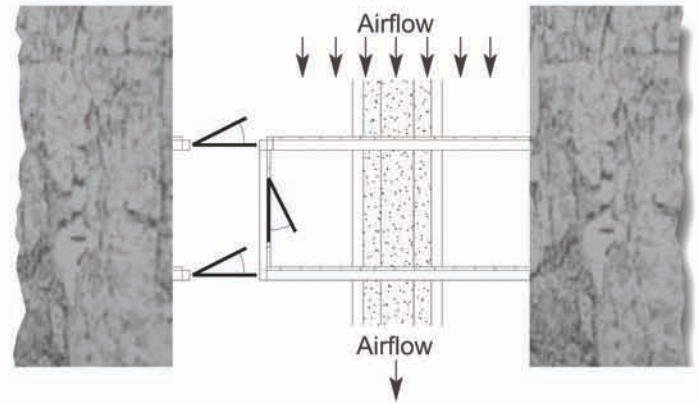
Too much conveyor belt air flow causing excessive dust and operation too near the regulatory limits, or preventing a better ventilation system design in the rest of the mine.

# Solution

A Kennedy modular conveyor box check can control air flow in belt entries with substantial differential pressures, 20 IWG or more.

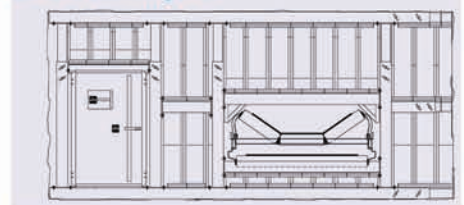
# Features

- Drastically reduces belt air flow.
- Adjustable to fit rough openings.
- Built to any size or pressure rating required.
- Customized to fit any belt structure & heap height.
- Available with conventional man doors or escape way doors.
- Optional airlock for high pressure installations.
- Designed to be constructed in an entry with the belt already present.
- Yielding structure automatically adjusts to roof to floor convergence & pillar expansion.

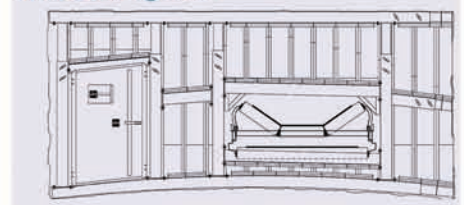


## ***Yields to Convergence!***

Before Convergence



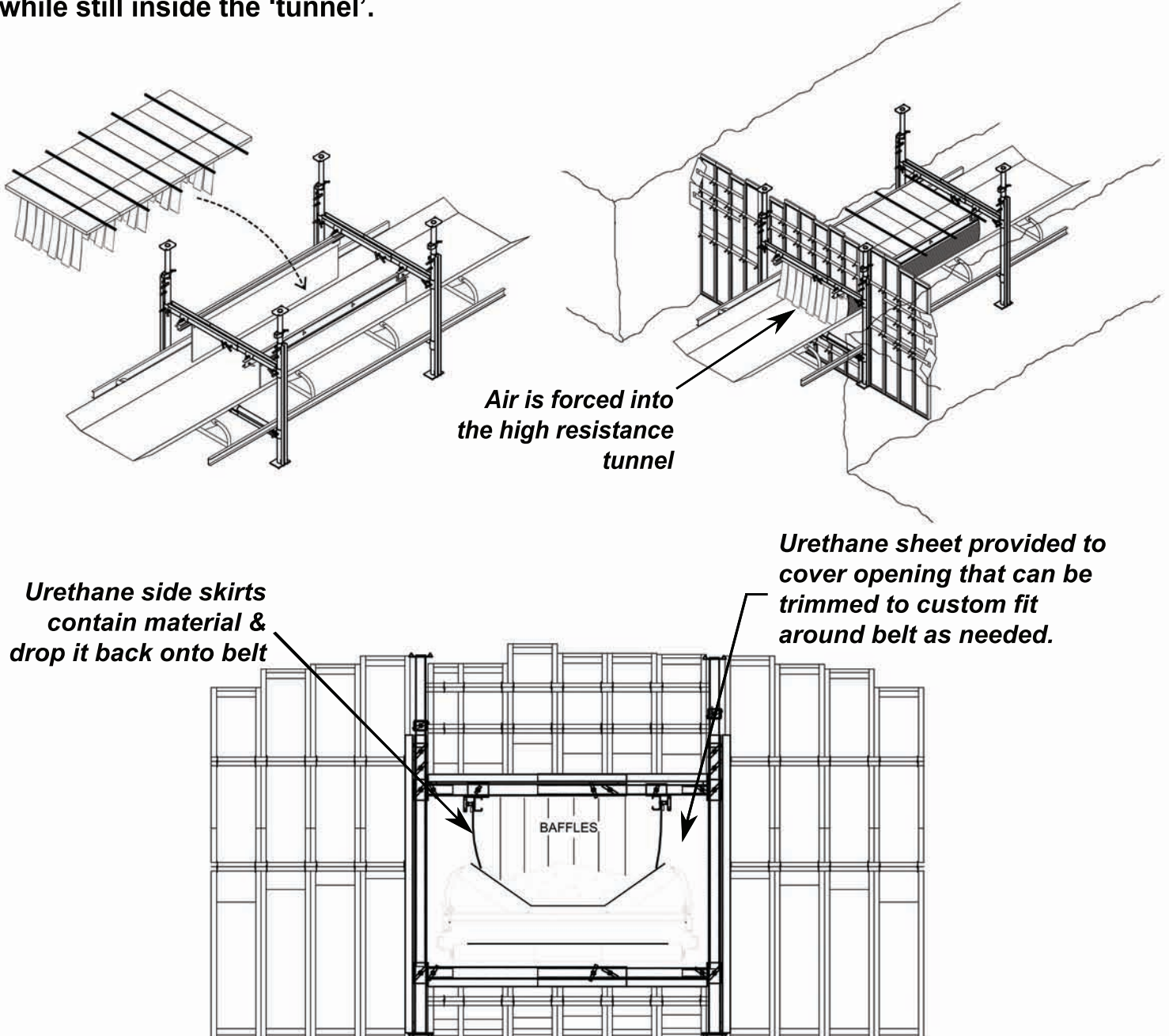
After Convergence



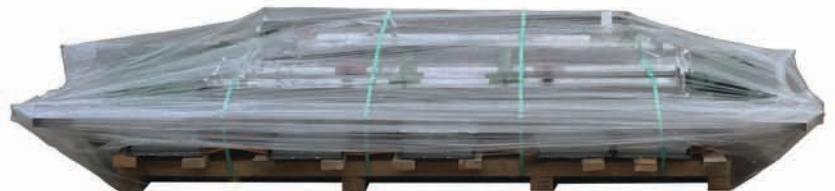


# Lightweight 'No Mess' Box Check

An alternative to the conventional box check is our lightweight 'No Mess' box check. A single stopping and a 'tunnel' with baffles formed by the belt, two side skirts, and a top baffle structure are the main components. Besides being easier to transport and install, it contains the dust created from turbulent air and drops it back onto the belt while still inside the 'tunnel'.



***All material fits on one skid!***





## **Jack Kennedy Metal Products & Buildings, Inc.**

**P.O. Box 138**

**Taylorville, Illinois 62568**

**Phone (217) 287-7231 Fax (217) 287-7232**

**Email [info@kennedymetal.com](mailto:info@kennedymetal.com)**

**[www.kennedymetal.com](http://www.kennedymetal.com)**

### **For the best ventilation use the complete Kennedy system... stoppings, doors & overcasts**

- Steel Stoppings
- NZL (near zero leak) Stoppings
- Overcasts & Undercasts
- Overcast Stairs & Ramps
- Over 200 Models of Man Doors
- Concussion Relief Doors
- Electrical Enclosures
- Power Machine Doors
- Regulators
- Automatic Regulating Systems
- Rescuer Boxes
- Belt Crossings
- Conveyor Box Checks
- Roof Brackets

#### **PATENT INFORMATION**

**These products are covered by or for use under one or more United States or Foreign Patents, granted or pending:**

772665, 6715961B2, 6682263B2, 7438506B2, 2004222798, 2487523, 7267505B2, 763802, 6846132B2, 2003200298, 2418176, 8444108, 2654815, 8162569, 2741272, 10/151203, 2822171, 89600419, 2014200775, 2843526, 10378355, 10287884, 10801323

**The product(s) shown herein are intended for controlling ventilating air in an underground mine and/or maintaining escape routes. As such, they are critical in nature and must be installed and maintained properly, according to the manufacturer's guidelines, MSHA regulations, & your company ventilation plan. Failure to do so could result in injury and/or death. See [www.kennedymetal.com](http://www.kennedymetal.com) for more information or contact the factory.**

Copyright © 2021 by Jack Kennedy Metal Products & Buildings, Inc.

All rights reserved. Printed in U.S.A.

Prices and specifications subject to change without notice.